



Norwela Facilities Rental Fee Schedule

Tier 1

Norwela Council Scouting Units/Registered Volunteers

Tier 2

Registered Scouting Units other than Norwela Council

Tier 3

All other Organizations and Individuals

Weekday Reservations for Cabins and Dog Trot:

1 p.m. to 1 p.m. the following day

Weekend Reservations are from:

Friday 1 p.m. to Sunday 1 p.m.

Weekday and weekend reservations for Dining Hall, Kitchen, Hallett, and Yatasi:

Daily 8 a.m. to 8 p.m.

Campsite X Cabins: 3 available, sleeps ten per cabin in five sets of bunk beds

	<u>Tier 1</u>	<u>Tier 2</u>	<u>Tier 3</u>
Non-Summer Rates:			
Weekday Rate per Night	\$40	\$40	\$80
Weekend (Friday through Sunday)	\$80	\$80	\$100
Cleaning deposit per cabin required	\$25	\$50	\$50

Summer Rental Rate: \$50 per person for 1 week (\$10/night)
*At this rate, there may be youth from multiple units using the cabin

Exclusive Rental: \$500/week *Unit/Occupant chooses who stays in cabin.

Lake Cabins: 12 available, sleeps eight per cabin in four sets of bunk beds

	<u>Tier 1</u>	<u>Tier 2</u>	<u>Tier 3</u>
Weekday Rate per Night	\$25	\$50	\$50
Weekend (Friday through Sunday)	\$40	\$80	\$80
Cleaning deposit per cabin required	\$25	\$50	\$50

Dog Trot Building: Two rooms, sleeps six; two in one room, four in the other

	<u>Tier 1</u>	<u>Tier 2</u>	<u>Tier 3</u>
Nightly Rate	\$25	\$50	\$50
Cleaning deposit required	\$25	\$50	\$50

Dining Hall: Seating for up to 180

	<u>Tier 1</u>	<u>Tier 2</u>	<u>Tier 3</u>
Rental Rate	\$100	\$300	\$300
Cleaning deposit required	\$200	\$200	\$200

Dining Hall & Kitchen:

	<u>Tier 1</u>	<u>Tier 2</u>	<u>Tier 3</u>
Rental Rate	\$200	\$500	\$500
Cleaning deposit required	\$300	\$300	\$300

Hallett Building: Training room, lounge area, restrooms with showers

	<u>Tier 1</u>	<u>Tier 2</u>	<u>Tier 3</u>
Rental Rate	\$100	\$250	\$250
Cleaning deposit required	\$150	\$150	\$150

Yatasi Lodge: Training room, restrooms, coffee maker

	<u>Tier 1</u>	<u>Tier 2</u>	<u>Tier 3</u>
Rental Rate	\$50	\$150	\$150
Cleaning deposit required	\$100	\$100	\$100

Facilities must be cleaned per instructions and certified by Camp Ranger/Camp Master before departure. Deposits will be refunded after the Council is notified by the Camp Ranger/Camp Master. There is **NO SMOKING INSIDE ANY BUILDING** at Kinsey Scout Reservation.

*Liability Insurance is required for all groups utilizing the facilities at Kinsey Scout Reservation.



NORWELA COUNCIL BOY SCOUTS OF AMERICA KINSEY SCOUT RESERVATION



**3492 HIGHWAY 171
STONEWALL, LA**

**LOCATED JUST SOUTH OF
SHREVEPORT IN STONEWALL,
LOUISIANA, THIS 1600-ACRE
CAMP OFFERS A UNIQUE OUT-
DOOR EXPERIENCE FOR SCOUTS,
YOUTH AND ADULT PROGRAMS
AND ORGANIZATIONS.**



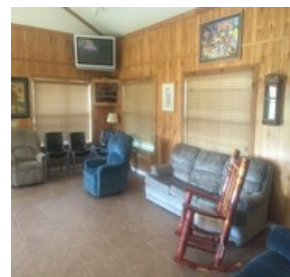
Campsite X Cabins

Capacity: 10 people (5 sets of bunk beds)
Air conditioned, not heated



Bud Hallett Building

Capacity: 30 people
Central heat and air conditioning
Meeting room
Large lounge area
Two bathrooms with showers
Hot and cold water sink
Refrigerator



Wasner Scout Center

Capacity: 20 people
Air Conditioned and heated
Large covered & lighted porch
Single restroom with shower
*The Wasner Scout Center can be rented by request.
Please call (318) 868-2774 for more information.



Lake Cabins

Capacity: 8 people (4 sets of bunk beds)
Air conditioned, not heated



Ken Finch Dining Hall

Capacity: 300 people
This facility is NOT air conditioned
Men's and Women's restroom
Gas heaters and fireplace
Commercial kitchen with central air and heat
Walk in cooler and freezer
3-room Cook Shack sleeps seven



**Weekday Reservations for
Cabins and Dog Trot:**
1 p.m. to 1 p.m. the following day

Weekend Reservations are from:
Friday 1 p.m. to Sunday 1 p.m.

**Weekday and weekend reservations for
Dining Hall, Kitchen, Hallett, and Yatasi:**
Daily 8 a.m. to 8 p.m.



Dog Trot

Capacity: 6 people
2 separate rooms
Air conditioned, not heated



Yatasi Lodge

Capacity: 40 people
Air Conditioned
Two meeting rooms
Restroom
Sink
Large covered porch

